

The digital burette **TITREX** is ideal for a fast and sensitive titration “drop by drop”. One instrument simulates all volumes up to 99.99 ml. Moreover, titration is possible without any loss of reagent! From air-purging, necessary for a precise titration, to disassembly of the burette in the end of the titration – the reagent, that is not needed for the titration flows back into the bottle! **TITREX**’s accuracy and precision are of highest quality. Our error ranges are better than those required by ISO 8655-3. The memory function allows saving of up to 1000 values, which can be transferred to a PC and read using the included software.



Digital display

Handwheel

Fine adjustment - with an additional knob the desired amount can be easily titrated or dispensed more precisely



only available with fine adjusted version

Reset button / Calibration button

TIT-Button: Titration mode

DOS-Button: Dosing / Dispensing mode

MEM-Button: Storage of data

The displayed value can be stored in the internal memory. This memory can be readout with the provided software and interface cord (RS232).

Discharge tube with protective sleeve

- 0° dosing and titration mode
- 90° air-purging mechanism in a closed circuit
- 180° rest position 100% drip-free

One instrument for all your titration and dosing applications



Quick and precise volume setting

The dispensing and titration volume can be set by turning the handwheels.

The mode can be changed by pressing „DOS“ respectively „TIT“.

The display shows the emitted volume („TIT“ mode) respectively the filled volume („DOS“ mode).

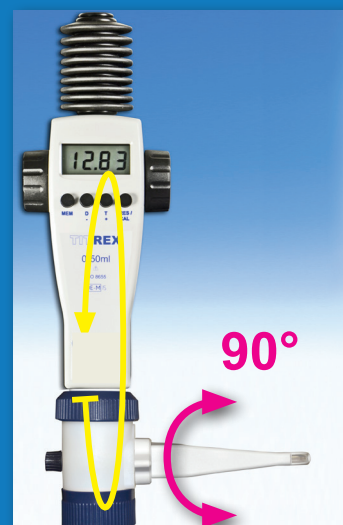
Perfect air-purging mechanism for 0% reagent loss

Turn the discharge tube at 90°.

Remove (purge) trapped air without reagent loss by pumping in a closed circuit. The reagent flows back into the bottle!

After pumping 2 - 3 times the dispenser is free of air and ready to use.

This special feature helps not only to save residual reagent but also when accidentally setting the wrong volume!



360°-turn for your added safety

No matter how much you tighten **TITREX**, you can always redirect the discharge tube by simply turning the valve block to the desired position. This way the label of the bottle is always visible.

This feature works for all our adapters. Adapters for different bottle threads can remain on the bottle.

100% drip-free system for your safety

By turning the discharge tube at 180° all liquid flows back into the bottle. **TITREX** is completely closed and no accidental discharge can occur by inadvertently moving the piston.

There is absolutely no dripping possible!



“Do-it-yourself” recalibration for a long life time

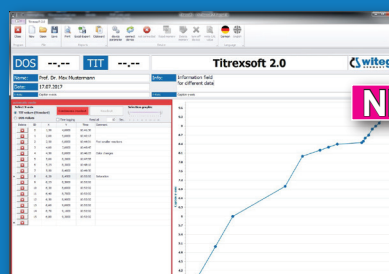
If you use **TITREX** as a measuring device in conformity to ISO 9001 and GLP, you need to control and monitor its accuracy and reliability. Therefore you can easily recalibrate the value by pressing „CAL“ until the display shows „CAL“. With the buttons „+“ and „-“ you can now adjust and correct the value.

TITREX can also be adjusted to liquids with other density and viscosity.

TITREX can also be recalibrated with the included **TITREXSOFT**.

TITREXSOFT

Included in scope of supply



NEW DEVELOPED

Through the access to the **TITREX**' memory, all data can be transferred to a PC – no more transmission errors!

The completely new developed software helps to process the stored data. Saved values can be read-out in real-time during the titration process or afterwards. Via the protocol export function, the data together with the automatically created graph can be either printed or saved.



One instrument
for all volumes

Digital burette

Your advantage at a glance:

- high quality precision instrument, made in Germany
- highest accuracy and precision, our error ranges are better than the DIN EN ISO 8655-3 requirements
- resistant against most acids and alkalis
- exclusive instrument with 0% loss of reagent - air-purging and draining within a closed circuit
- 360° rotatable valve block for your added safety
- two-in- one instrument: dosing & titration
- covers the complete volume range up to 50 ml when used as a dispenser and up to 99.99 ml when used as a burette
- easy and precise volume setting
- vertical valves: no sedimentation, no contamination
- 100% drip-free by turning the cannula at 180°
- no transcriptions errors due to automatic value storage and the possibility of transferring values to a PC via RS232 interface (USB adapter optional available)
- calibration: standard with water of 20°C
- software enables saving the next calibration date
- recalibration for liquids of different viscosities possible e.g. determination of acid content in milk
- easy to dismantle and to clean, valve block autoclavable at 121°C
- automatic power-cut-off after three minutes
- including NiMH 1,2V 2100mAh battery
- individual certificate, CE label and serial number
- DE-M marked according to the German calibration law

Zero loss of reagent

TITREX inclusive software and RS232 interface cord

Type	Volume	witeg		ISO 8655-3		Order number
		Systematic errors	Random errors	Systematic errors	Random errors	
	ml	± ml	≤ ml	± ml	≤ ml	
Standard	0-50	0.03	0.01	0.1	0.05	5 497 050
Fine adjustment	0-50	0.03	0.01	0.1	0.05	1080856

Scope of supply

TITREX, suction tube, discharge tube, instruction manual, individual certificate, serial number, battery charger with EU and US adapter, software TITREXSOFT, RS232 interface cord, thread adapter A25, A28, GL32/45, S40

Parts in contact with reagent:

The components having direct contact with the reagent are made of chemical resistant materials: platinum spring, ceramic valve balls, PTFE piston, borosilicate glass 3.3 cylinder, borosilicate glass 3.3 valve

Optional accessories for TITREX and general titration applications

Type	Order number
TITREXSOFT (in scope of supply of digital burette Titrex) supports all manual titration applications, automatic graph creation, protocol export function, access to digital burette Titrex memory	NEW DEVELOPED 5 497 900
RS232 to USB adapter To connect the RS232 interface cord with an USB port	5 497 920